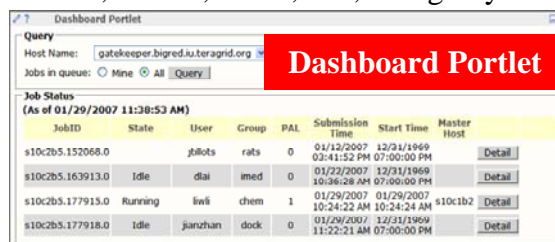
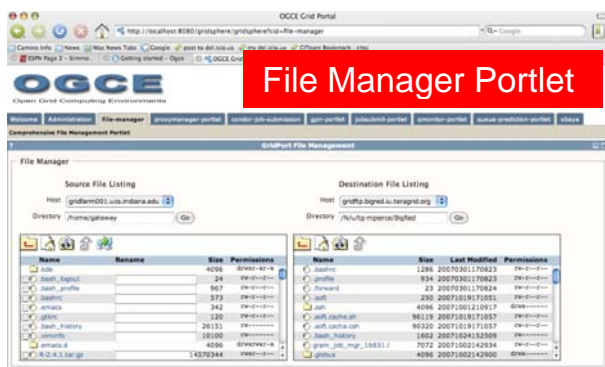


[gcf@iu.edu](mailto:gcf@iu.edu)

[mpierce@cs.iu.edu](mailto:mpierce@cs.iu.edu)

## OGCE Open Grid Computing Environment Portal Components

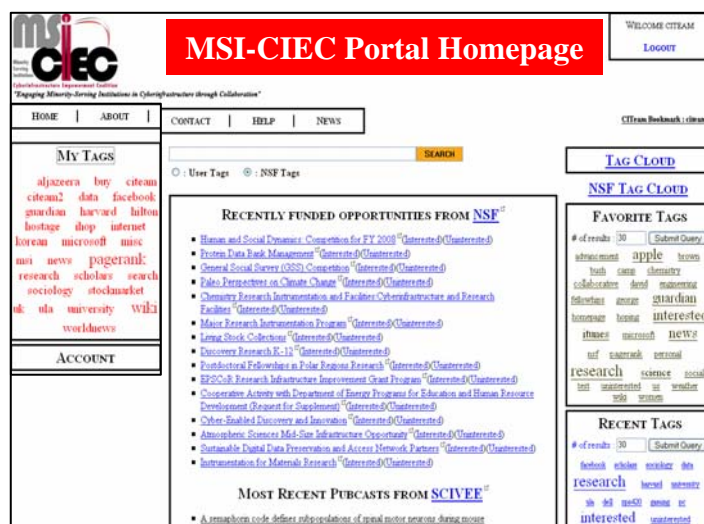
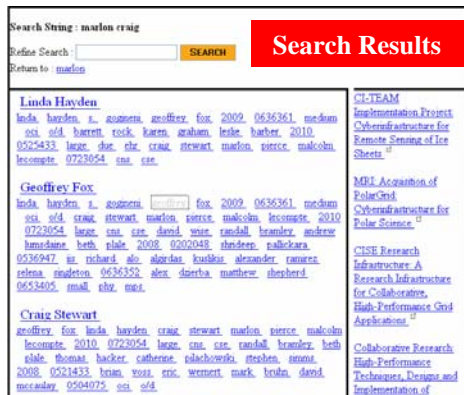
Indiana University, RENCI, RIT, SDSC, SDSU, TACC supporting TeraGrid Science Gateways with Portlet and Web 2.0 Interfaces for GridFTP, GRAM, GPIR, Condor, Condor-G, Proxy Management, Queue Prediction, PURSE, Xbaya workflow, GFAC, GPIR, and, XRegistry



## MSI-CIEC Web 2.0 Research Matching Portal

Portal supporting tagging and linkage of Cyberinfrastructure Resources

- NSF (soon other agencies) Solicitations and Awards
  - Feeds such as SciVee and NSF
  - Researchers on NSF Awards
  - User and Friends
  - TeraGrid Allocations
- Search for linked people, grants etc.



Find Researcher you want to work with!  
Add any document/resource from Web

## IDIOM Integrates Documents from Internet with Metadata

Build secure group digital library with Web Service linkage of Connotea, CiteULike, del.icio.us, Windows Live Academic, Google Scholar, Local databases.

