

Community Grids Lab

AT INDIANA UNIVERSITY



pervasive**technology**labs

AT INDIANA UNIVERSITY

# Welcome to Community Grids Laboratory

## Mission

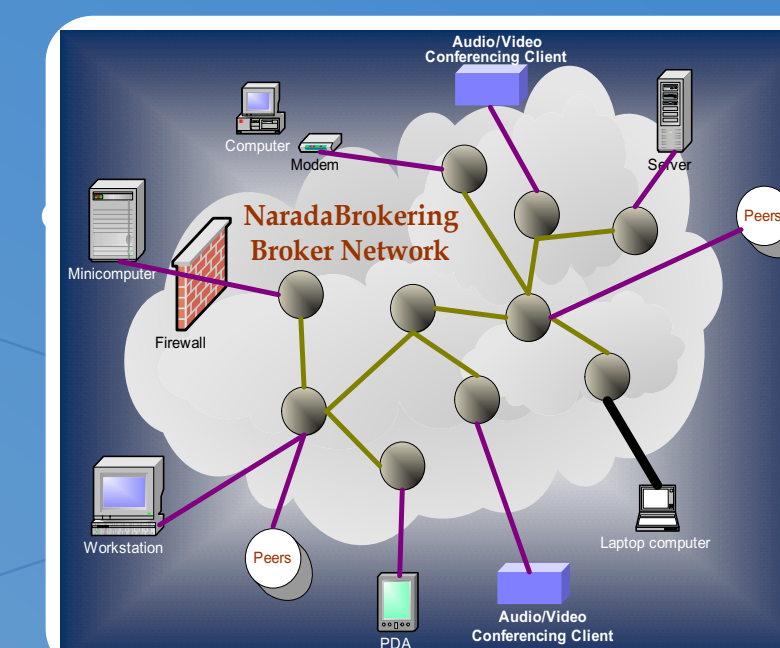
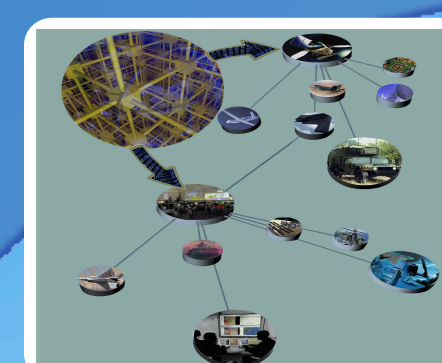
The mission of the Community Grids Lab (CGL) is to create the technology that will enable grid computing to help solve important scientific problems. In creating new global communities, grid computing will open the way to new possibilities for e-Science and e-Business.

## Key Technologies

Distributed Messaging  
Multimedia Services  
Portal Components  
Grid Services

## Net Centric Grid of Grids

<http://grids.ucs.indiana.edu/ptliupages/publications/gig>



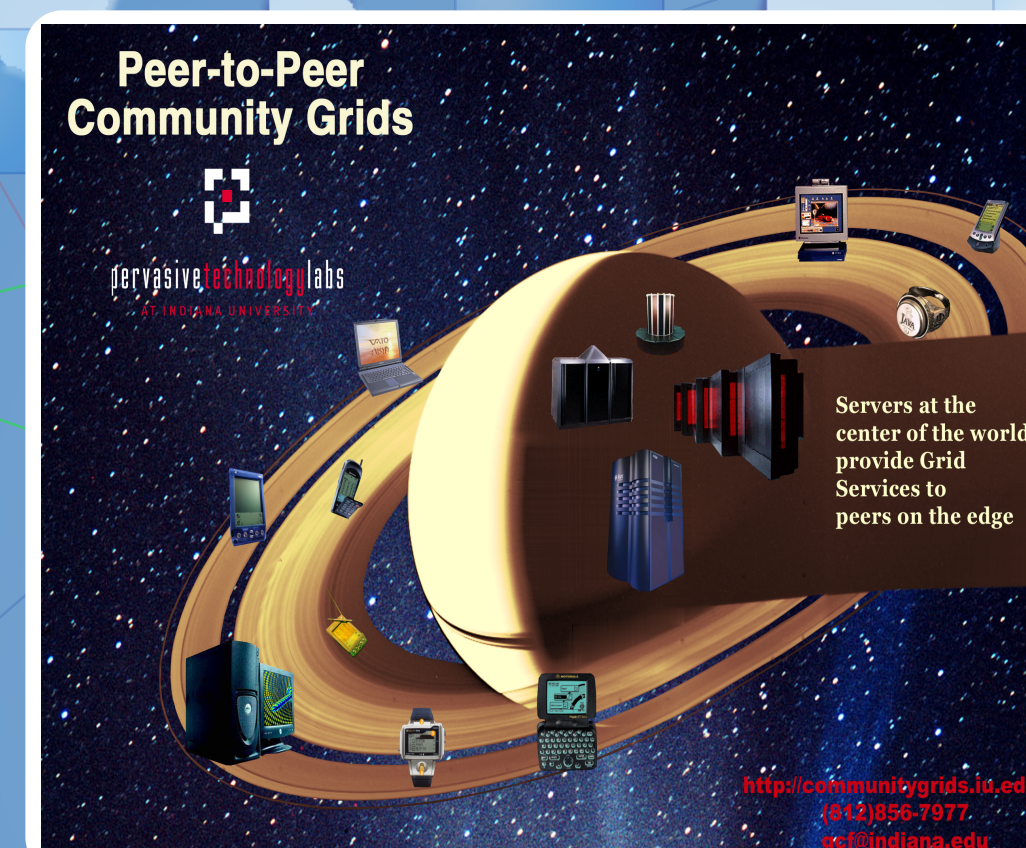
## NaradaBrokering

[www.naradabrokering.org](http://www.naradabrokering.org)



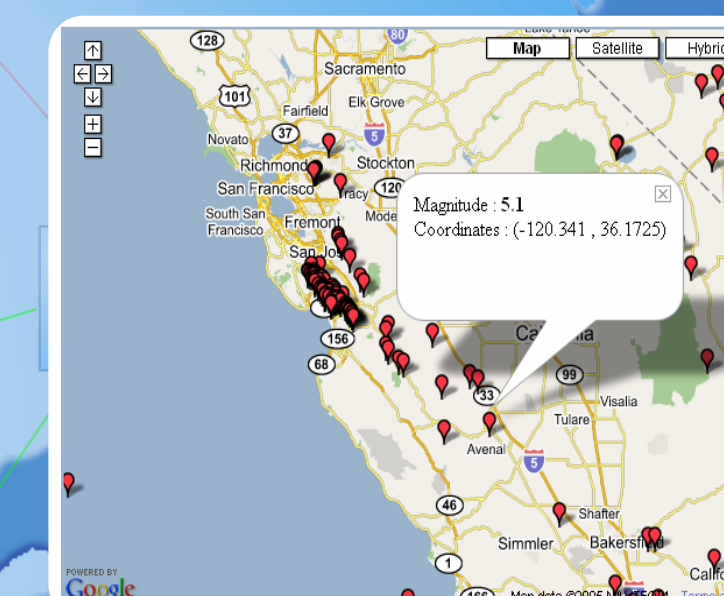
## MSI Cyberinfrastructure Coalition

[www.educationgrid.org](http://www.educationgrid.org)



## Collaborative Grids

[www.infomall.org](http://www.infomall.org)

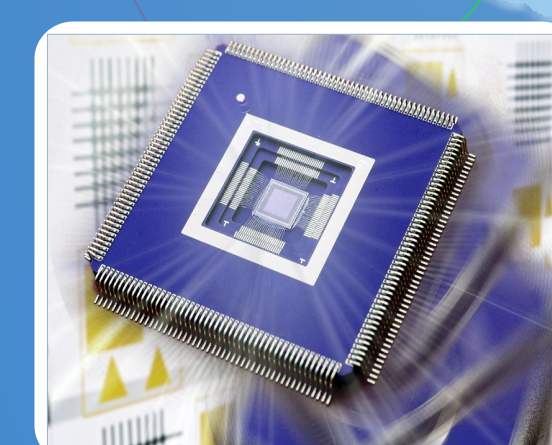


## GIS Portal and Services

[www.collab-ogce.org](http://www.collab-ogce.org) [www.crisisgrid.org](http://www.crisisgrid.org)

## Focus

CGL focuses on creating new technology infrastructure and applications that will enable cyberinfrastructure for distributed science and engineering, and distributed business enterprises. We build and support communities - especially those from Minority Serving Institutions.



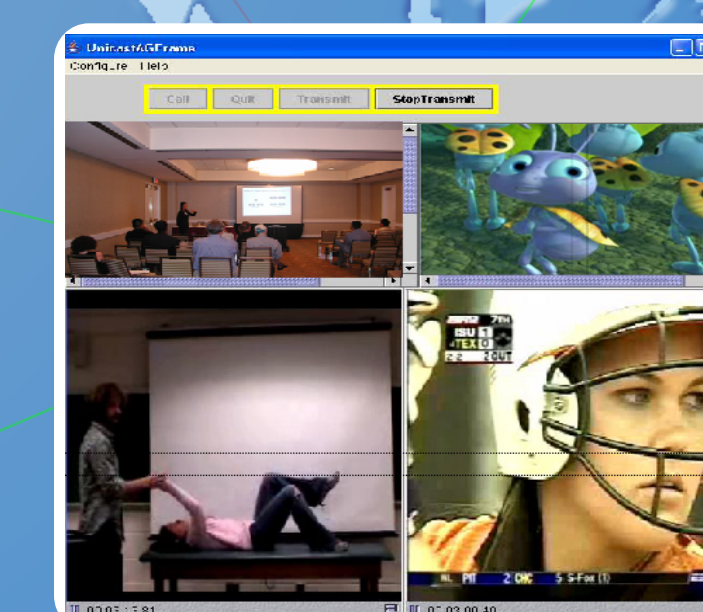
## Multi-core Chips

<http://grids.ucs.indiana.edu/ptliupages>



## CHEMBIOGRID

[www.chembiogrid.org](http://www.chembiogrid.org)



## GlobalMMCS

[www.globalmmcs.org](http://www.globalmmcs.org)

## Applications

e - Sports  
e - Science  
e - Learning  
Computation  
Communication  
e - Entertainment

Community Grids Laboratory  
Indiana University  
501 N. Morton, Suite 224  
Bloomington, IN 47404

<http://communitygrids.iu.edu>  
(812)856-7977  
[gcf@indiana.edu](mailto:gcf@indiana.edu)