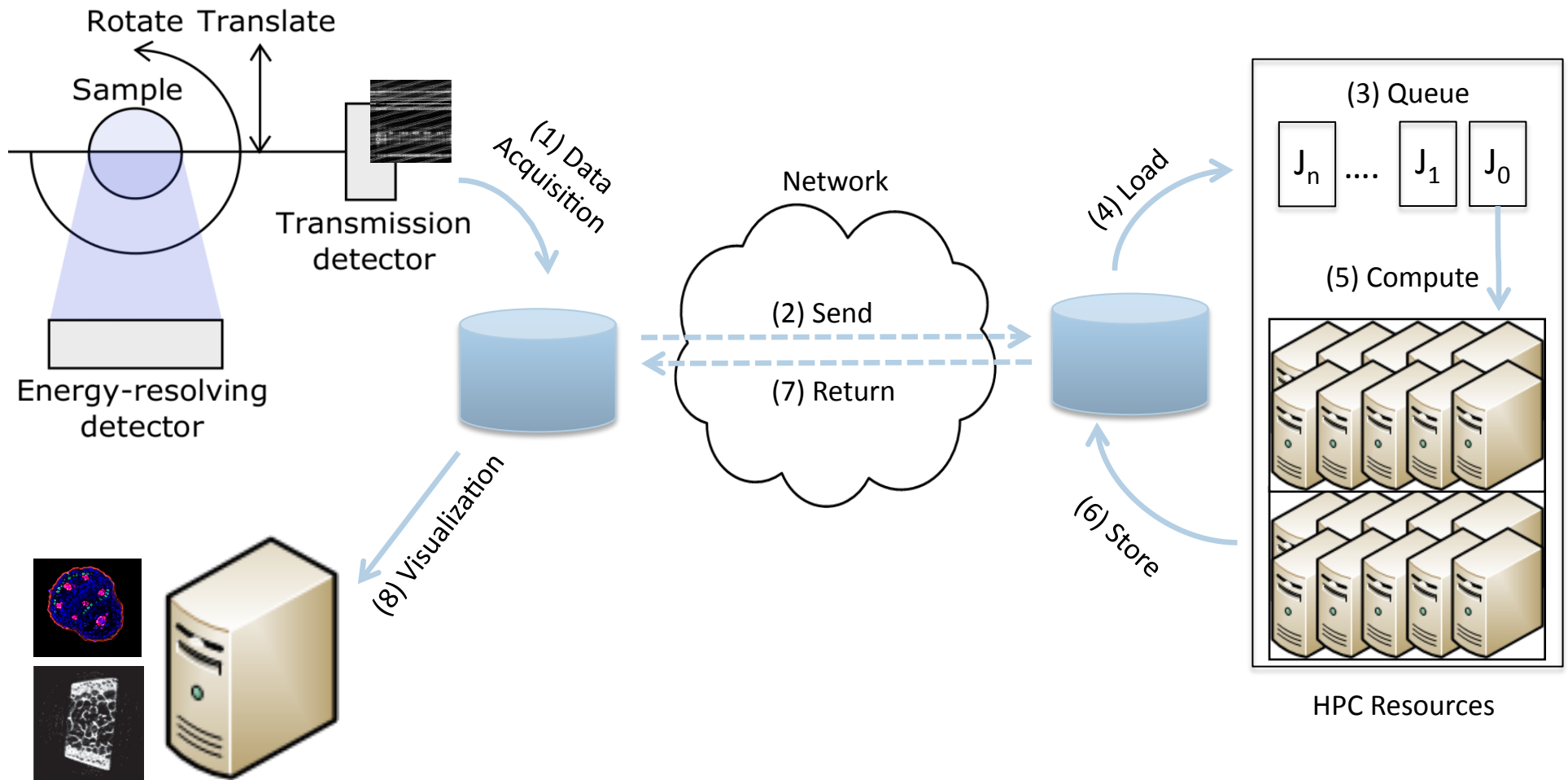


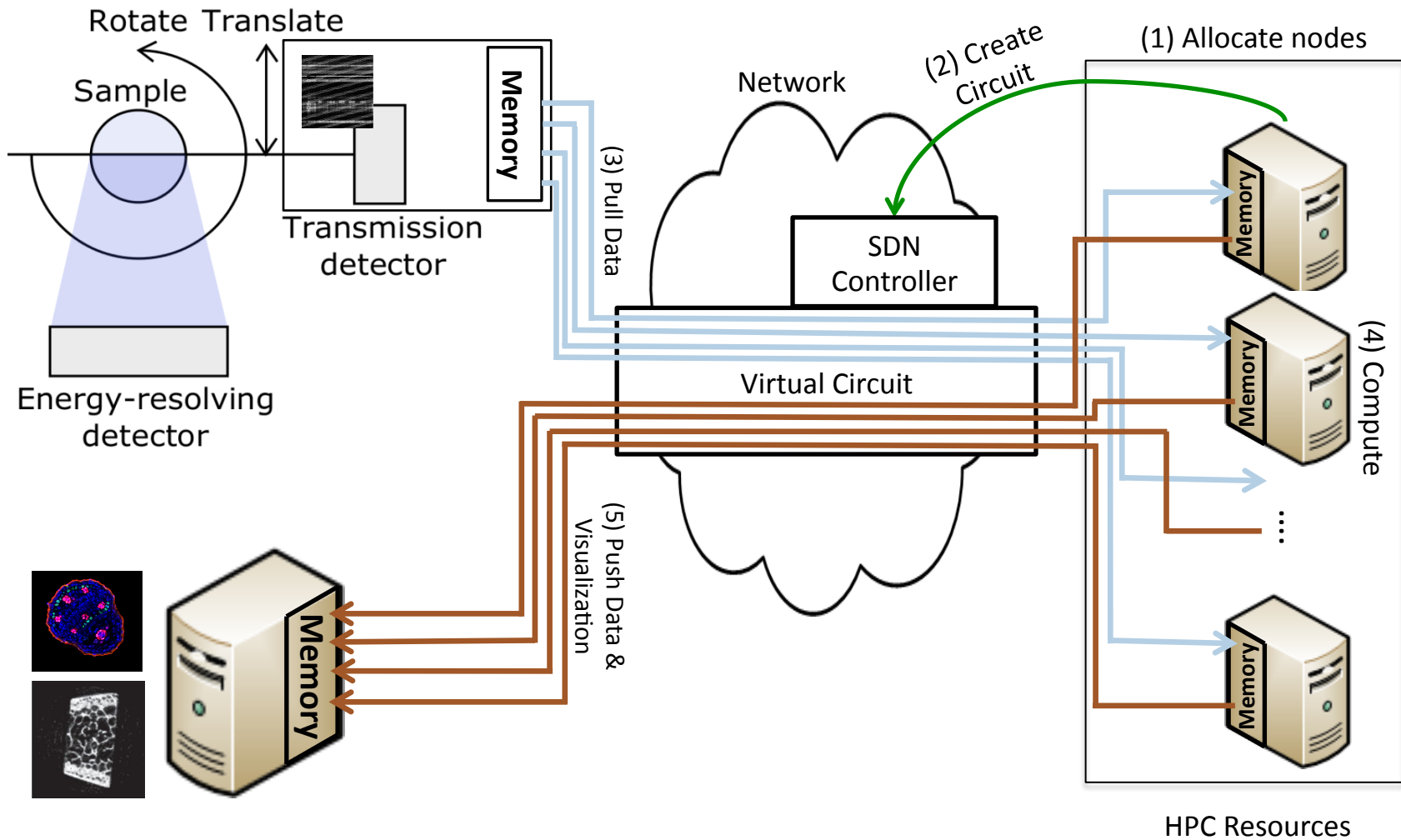
Computing and Networking Challenges in Supporting Streaming Applications

Raj Kettimuthu and Ian Foster
Argonne National Laboratory

Light source workflow - current



Light source workflow - future

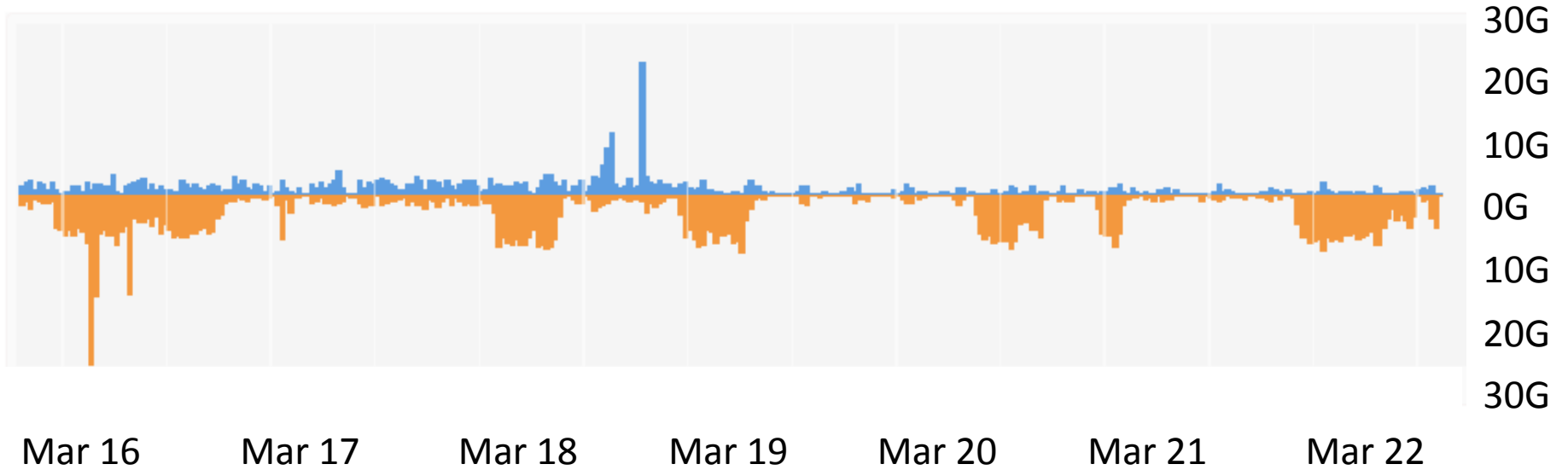


On-demand computing in supercomputers

- Real-time queue?
 - Higher charge rate
 - NERSC has modest number of nodes allocated
- Steal resources that service the batch queue?
 - Preempt batch jobs
 - Low-priority queues?
 - Lower charge rate
- How to keep the average utilization of the system high?
 - Bursty real-time loads
- Checkpointing
 - User or system?
 - Restart overhead



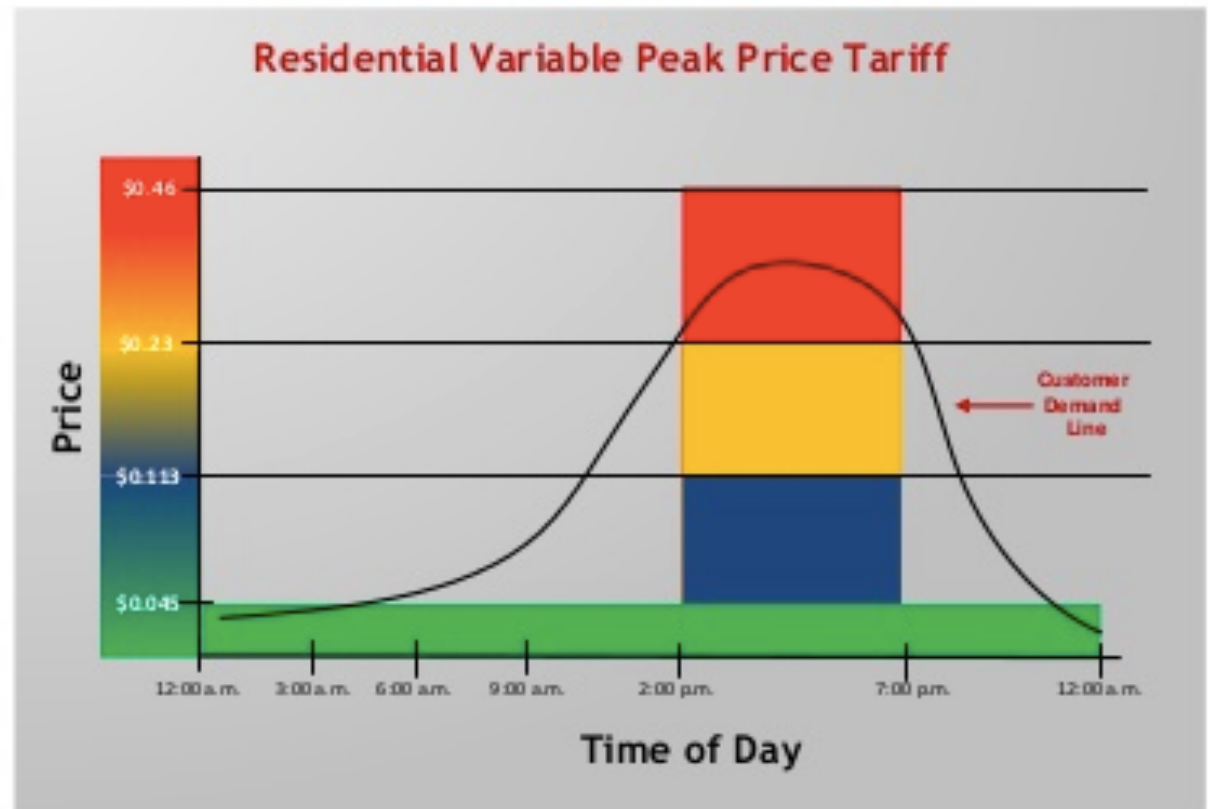
Peak vs. average network utilization



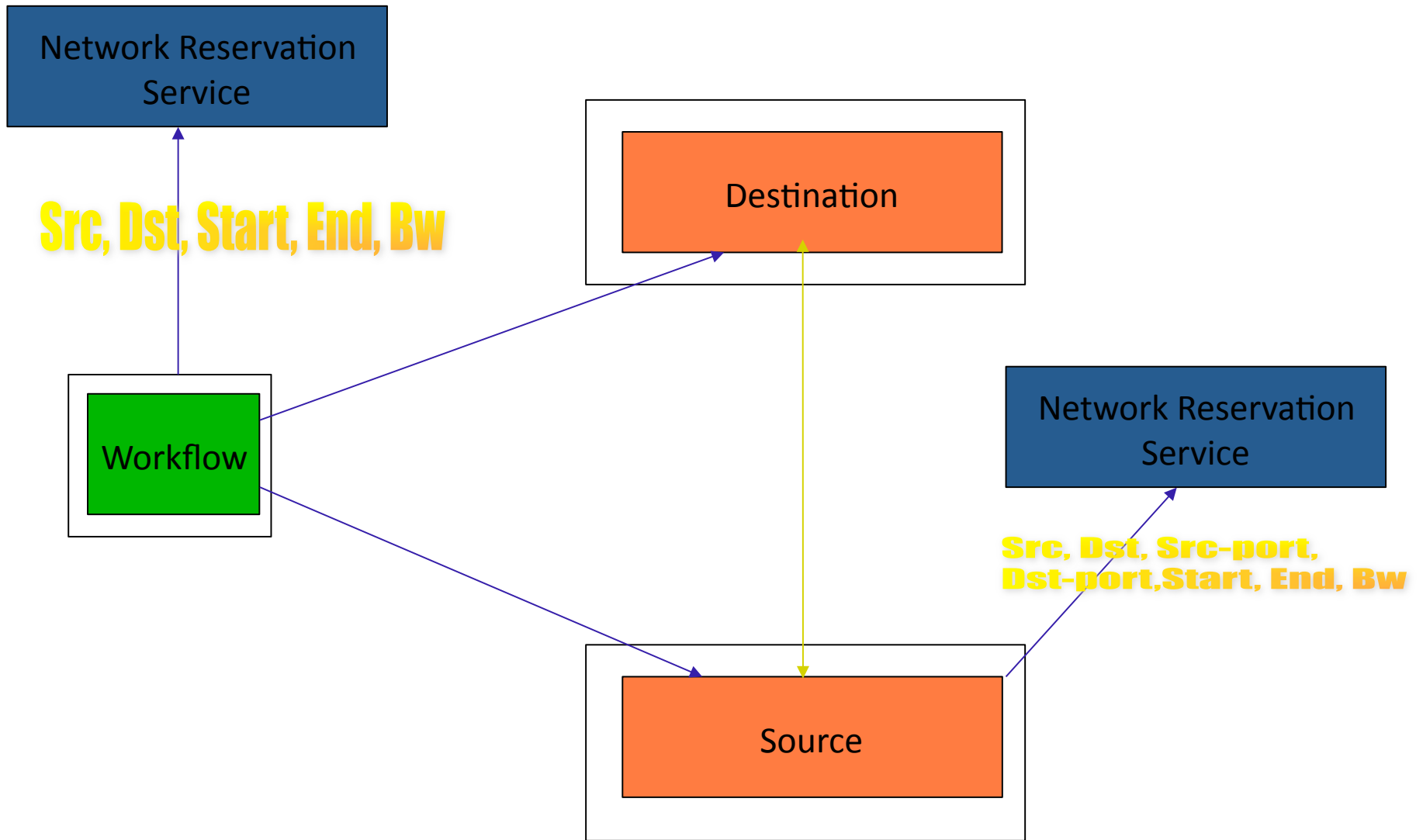
Charge network bandwidth?

New Dynamic Pricing Options Offered

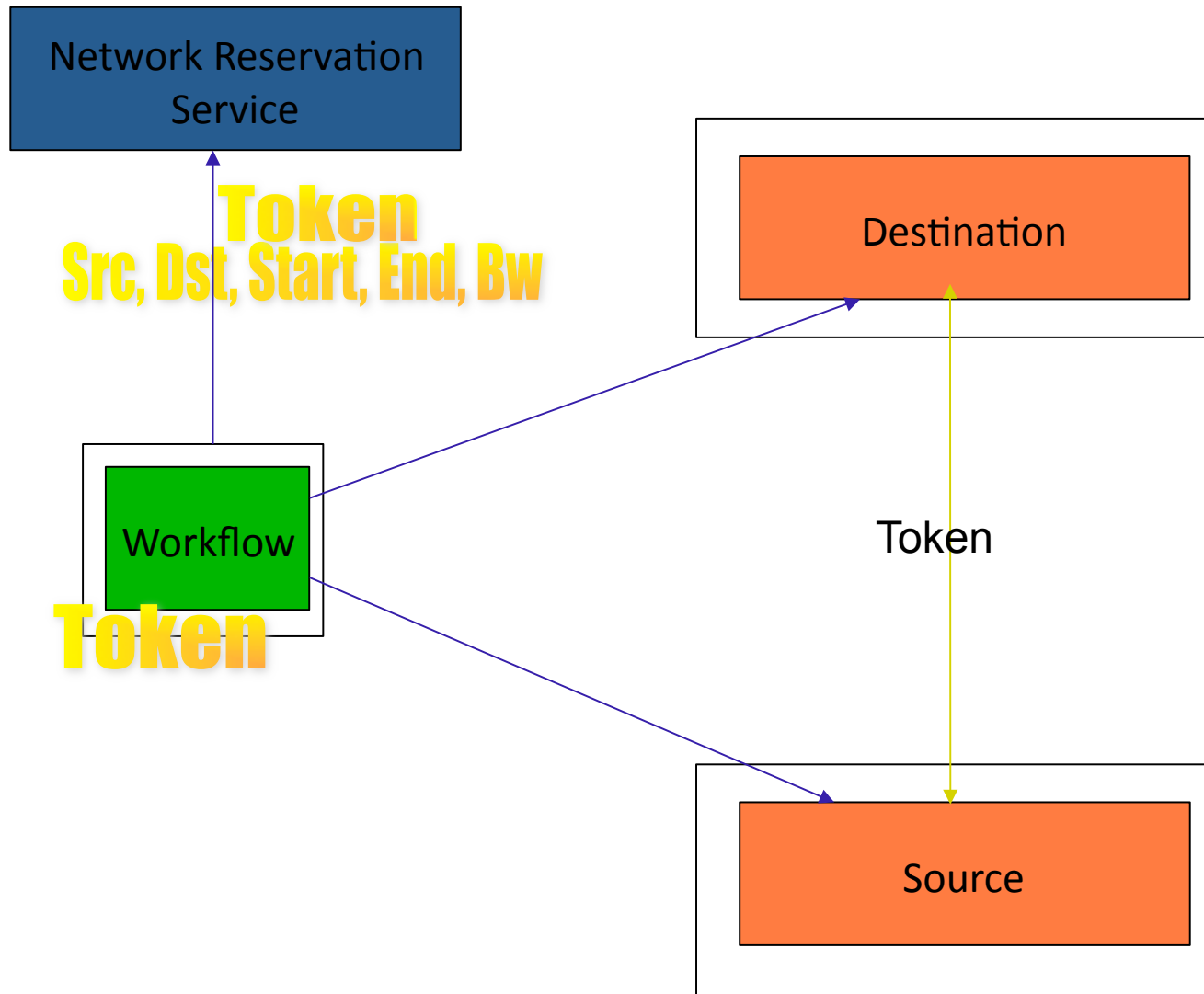
- **Hours:** 2 – 7pm, Monday - Friday
- **Summer Season** (June – September)
- Customers receive day-ahead price via in-home display, web, text, email, voice message
- Tariff is **optional**
- **Customer** decides how to respond & manage consumption



Gaps in current network reservation methods



Gaps in current network reservation methods





Questions

