

1 Start Tango

- Once Tango is installed you should have a Tango icon on your desktop. Double-clicking it will start the Netscape browser and load the Tango client.
- The initial process of loading the client may take some time due to the initialization of the Swing library. Please be patient.
- The picture below shows the loading screen.



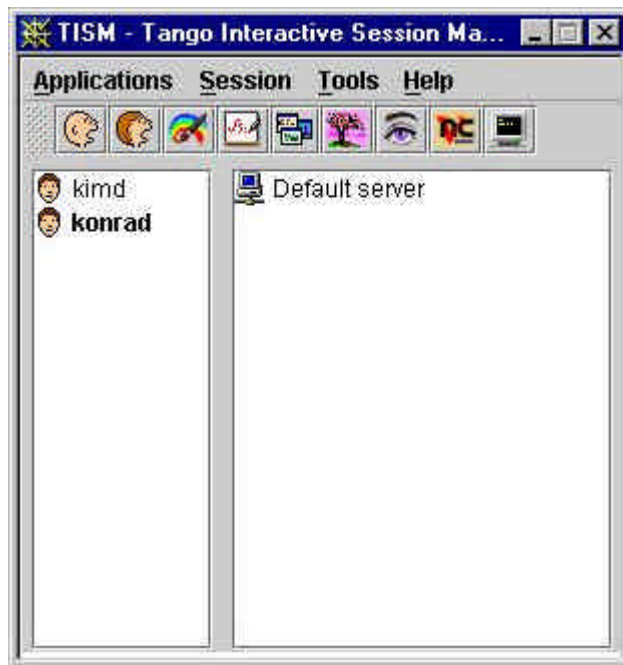
2 Once Tango is started log-in



- Type in your username and password
- Select the right server (if there is more than one)
- Click OK
- If the server is not running or you typed an incorrect username/password you will be notified by the appropriate message.



- If the login is correct you will see the main Tango interface.



3 Review the system

3.1 See who else is in

- The left panel of the Session Manager shows all the users that are currently connected to Tango. The local user (that would be you) is marked with the bold font.
- Double-clicking on each of users brings a popup window with additional details.



- The icons to the left of names signify the current state of each user. There are three possible states: active (regular face), busy (face with an asterisk) and absent (face with a cross)
- You can change your own state by right-clicking on your name. A popup menu with radio buttons will appear and let you choose the new state. In addition if you select 'absent' you will be asked to provide additional information that can be viewed by other users of the system (as part of user properties).
- The User Panel can be hidden/shown dynamically by using the User Panel checkbox in the Tools menu.

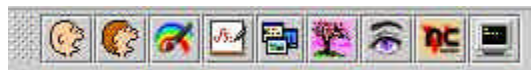


3.2 See what applications you can use

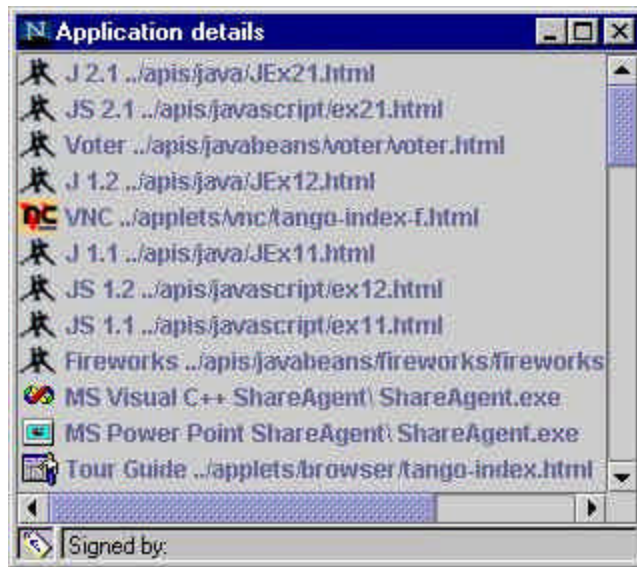
- The applications are available through the Applications menu (first to the left). The applications are grouped in folders.



- The most popular applications can be accessed from the toolbar. The content of the toolbar can be dynamically changed from the Options menu.

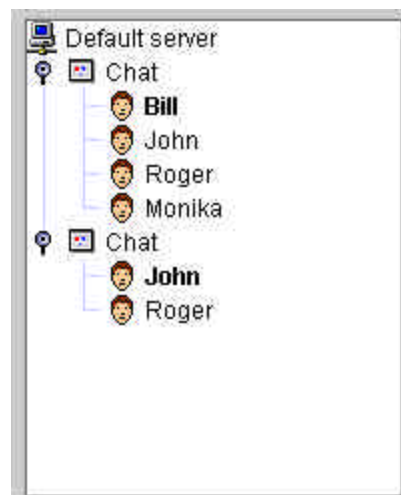


- You can see all the applications and their starting points from the Options menu.



3.3 See the action – look at the running applications

- The right panel of the Session Manager is the Session Panel. This panel represents the current state of the system. The panel displays a hierarchical tree structure that shows the running applications and the people that are connected to them. The root of the tree is the server you are currently connected to. The next level shows the currently running applications. The third level represents users sharing each application.



- Each application can be shared by any group (from one to everybody) of users that are currently logged in the system.
- There can be several instances of the same application shared by various groups of users. For instance if there are five users: John, Bill, Roger, Steve and Monika logged into the system the four of them may share one chat while at the same time John can talk in another chat with Roger only. User Steve is logged into the system but does not currently share any application. This situation is reflected in the picture above.

- The application present in the system does not signify that this application is currently running on your machine. If you are not one of the users sharing the application you can become one by picking the session and using the Join option.
- After the state of any application changes the information displayed is updated automatically.

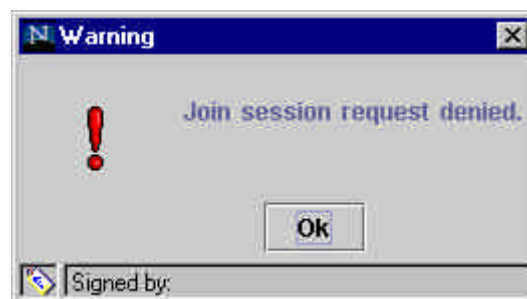
4 Start using it

4.1 Join already running application

- If the application is already running you can select it in the Session Panel (see 3.3) by clicking on it. Once the application is highlighted you can right click to invoke the popup menu and select “Join” option. Alternatively you can go to the Session menu and select Join from there.

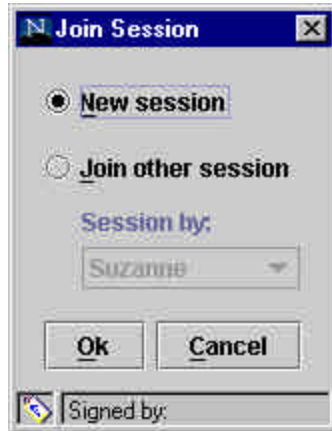


- Once the Join option is selected the application should start on your machine. Note that the person that has the control of the application you are trying to join may select to decide whether new users should join the application (see 6.1). If this person will deny your request to join you will be notified by the appropriate dialog box.



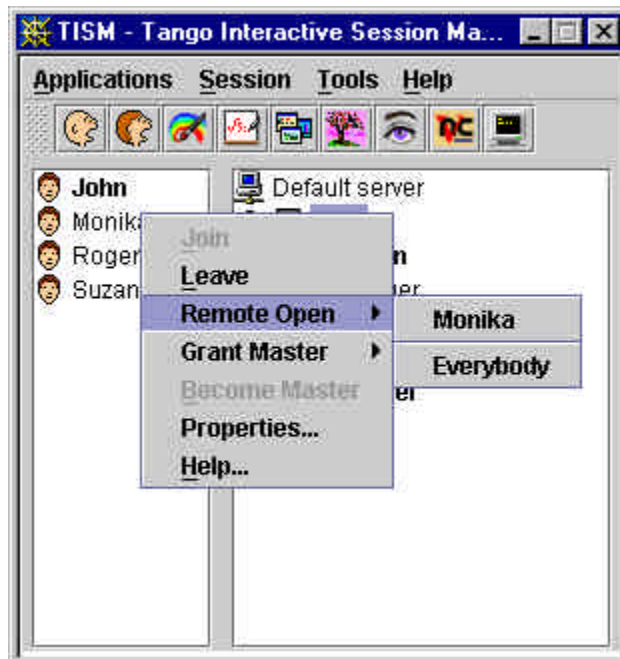
4.2 Start the session by yourself

- If you decide to start a new application to be shared you can do so by either selecting the application from the Applications menu or by clicking on the appropriate icon on the toolbar. Once you do it the application should start immediately.
- If you start the application you will be initially the only user sharing it. You can either invite other users to share the application by using Remote Open option (see 4.3) or wait for them to join (see 4.1).
- If the application you are trying to start is already running and you are sharing it you will be presented with a dialog asking you if you prefer to join the existing application instead. If there is more than one such application you will be able to select it from the list.



4.3 Invite somebody to share an application

- Once you successfully started/joined an application you can invite other people to share the application with you. You do so by highlighting the application in the Session Panel, right clicking on it and selecting the Remote Open option and then the name of the user you want to invite. You can choose the same command from the Session menu.



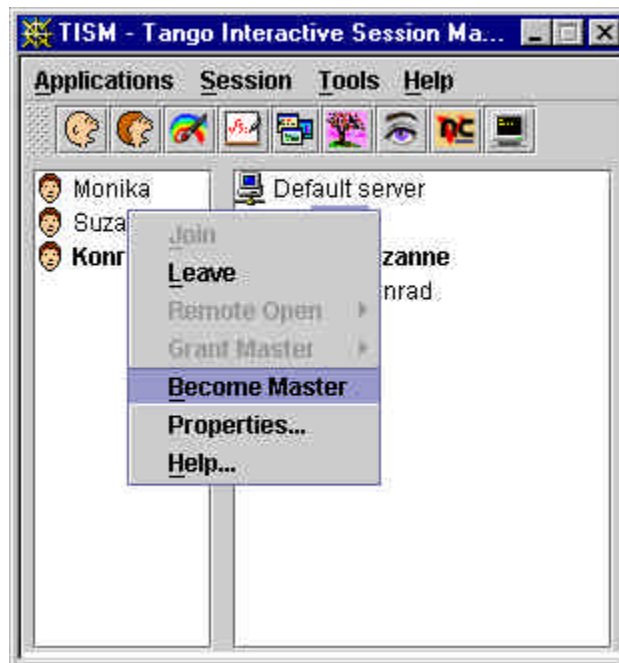
- If you want to invite everybody you should choose 'everybody' from the list of names (the last position on the list).
- In order to use the Remote Open option you have to be in control of the application (see 5, if you are in control your name will be in bold in the session panel)

5 Control the floor

- In the current system the floor control is implemented using the master token. For each running application one of the users is in possession of this token (has the master status).
- Initially the master status belongs to the user that started the application.
- In the Session Panel the user that holds the master status is designated by the use of bold font.
- The master status controls the use of system operations such as Join and Remote Open. Only the user with master status can use Remote Open. Also if a new user wants to join the application the user with master status has an option to deny it.
- In addition to the system use the master status is also passed to each application. The use of the status on the application level is entirely up to the application. Some applications (for instance Chat) do not change their behavior in any way. Some others (e.g. Shared Browser) capture this status and make use of it – Shared Browser shares only pages that are pointed by the user with the master status.
- The master status can be changed dynamically while the application is running (see 5.1 and 5.2).

5.1 Acquire floor control

- To acquire the control you have to highlight the application by clicking on it, go to the Session menu either by using the right click or going to the Session menu and select the Become Master option.

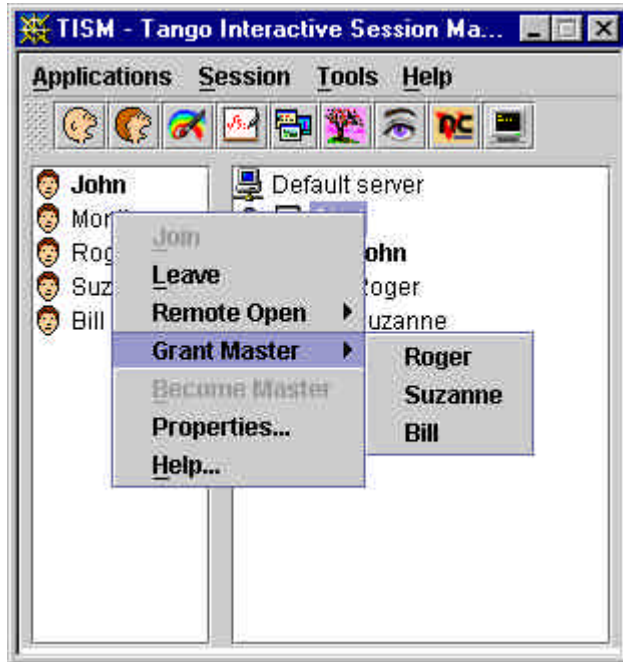


- If the current master sets the option to confirm the change of status he/she will have the option to either allow or disallow the operation. If you are denied the master status you will

see the dialog box with the information. Otherwise your status should change and your name should appear in bold.

5.2 Hand the control to somebody else

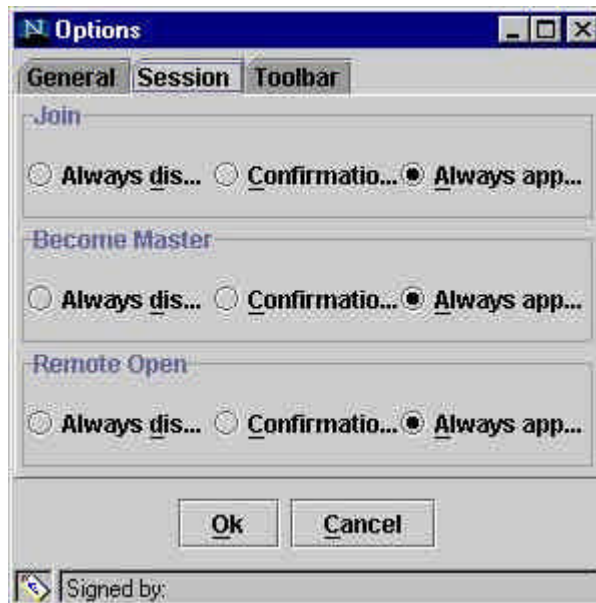
- If you want to give the control to some other person that is sharing application with you, you can do so by using the Grant Master option from the Session menu. You will see a list of all people that you can grant master status. Select one of them – this person will automatically become in control of the session.



6 Configuration issues

6.1 How to control access to your applications

- By default all the applications can be shared automatically, that is any user can join to an application you started and you can be invited to share somebody's else application. You can control this process by setting appropriate access options.

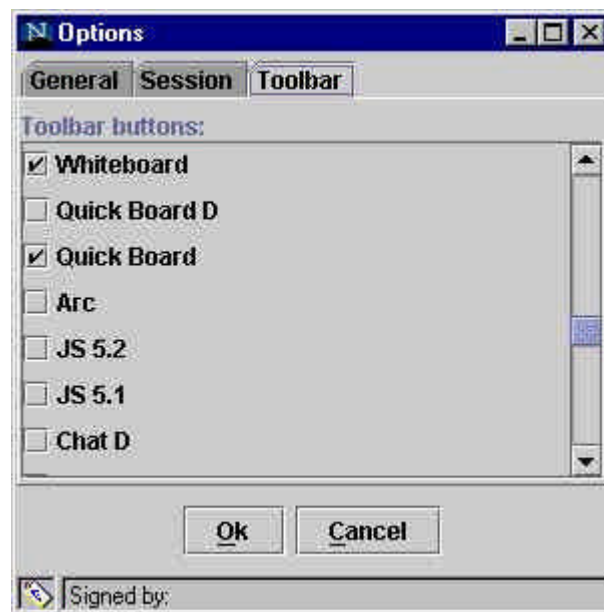


- To control the global settings go to the Tools menu and select Options. In the Options menu click the Toolbar tab. You will be presented with a list of all the applications and checkboxes next to them. Selecting the checkbox makes the application icon appear on the toolbar, unselecting removes the application from the toolbar.
- It is also possible to set these settings for each session separately. To do so right click on a selected application in the Session Panel and choose options from the popup menu.



6.2 How to change the content of the toolbar

- The icons that appear in the toolbar can be changed dynamically. In order to do so go to the Tools menu and select Options. In the Options menu click the Toolbar tab. You will be presented with a list of all the applications and checkboxes next to them. Selecting the checkbox makes the application icon appear on the toolbar, unselecting removes the application from the toolbar.



6.3 How to switch servers

- Tango client gives you the ability to switch between available servers. This option is available from the initial login dialog.
- Once you are logged into the system you can switch servers by selecting server in the session panel and right-clicking into it. This will bring a popup menu. Select “Disconnect”. As a result you will get disconnected from the current server and presented with a login dialog again.
- In the login dialog you can change your user name and server from the list. Once you click OK button you will be connected to another server.



6.4 Server details

- You can see the information about the server you are currently connected to. In order to display them select the server in the session panel, right-click on it and select Properties option. You will see the dialog containing information about host name, port number, short description of server and current number of users.

